

ISSUED: 4-15-78

REPLACES:

TITLE: ENGINEERING GUIDES

570 - 2.01-4

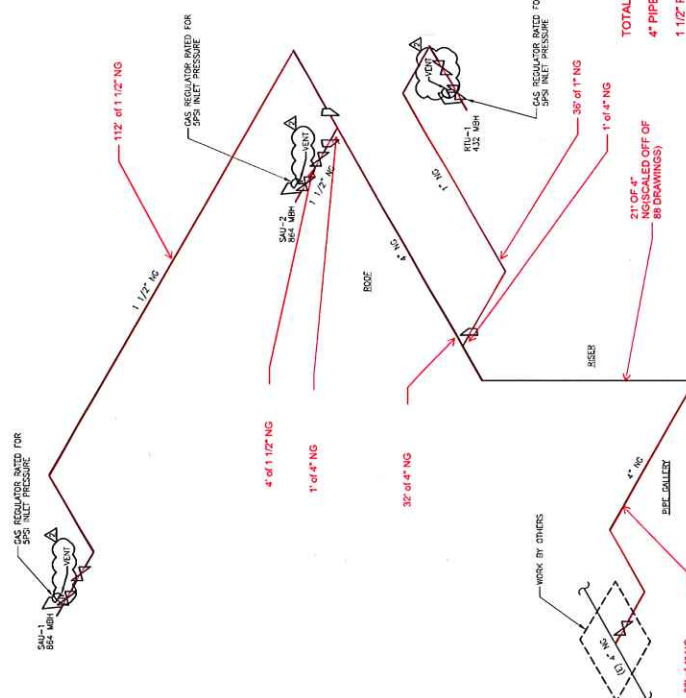
PAGE 5 OF 8

GAS LINE CAPACITIES, NATURAL GAS

PIPE SIZING TABLE FOR 5 LB. PRESSURE

Capacity of pipes of different diameters and lengths in cubic feet per hour for a 10% pressure drop and a gas of 0.8 specific gravity.

Pipe Size of Schedule 40 Standard Pipe (Inches)	Total Equip. Length of Pipe in Feet									
	50	100	150	200	300	400	500	1000	1500	2000
1-1/4	1,850	1,320	1,070	930	750	660	590	410	340	290
1-1/2	3,670	2,740	2,240	1,930	1,590	1,370	1,220	860	700	610
2	5,060	4,140	3,390	2,930	2,390	2,060	1,850	1,310	1,060	930
2-1/2	11,420	8,070	6,600	5,710	4,660	4,050	3,610	2,550	2,000	1,810
3	18,400	13,010	10,600	9,200	7,510	6,530	5,820	4,110	3,350	2,920
3-1/2	32,860	23,240	19,000	16,430	13,410	11,660	10,390	7,340	5,990	5,220
4	48,480	34,280	28,030	24,240	19,790	17,200	15,330	10,820	8,840	7,690
5	67,700	47,860	39,140	33,650	27,630	24,020	21,410	15,120	12,340	10,750
6	123,790	87,540	71,570	61,890	50,530	43,920	39,160	27,640	22,570	19,660
	202,138	142,990	116,870	101,060	82,500	71,720	63,940	45,140	36,860	32,100



1 NATURAL GAS RISER DIAGRAM
NOT TO SCALE

TOTAL LENGTHS OF PIPE:
4\"/>

LONGEST DISTANCE FROM TIE-IN POINT TO SAU-1: 227'
TOTAL LENGTH OF NG PIPE: 269'

APPROVED CODES:
International Mechanical Code/2018
International Fuel Gas Code/2018

REVISIONS	
5	ISSUED FOR BIR REVIEW
1	ISSUED FOR PERMITTING
2	REVISED PER COMMENTS
1	
1	
1	
1	
1	
1	
1	
1	

FILTER BUILDING VENTILATION
PLUMBING
GAS RISER DIAGRAM

NORTH JERSEY DIRECT WATER SUPPLY COMMISSION
174 STEVENS DR., WALLACE, NEW JERSEY

JACOBS ENGINEERING GROUP INC.
415 Mt. Kisco Ave. Suite
Morristown, NJ 07960
NJPCA License #996260
PROJECT # 24GE05367600
DATE 05/20/19
SCALE NO SCALE
APPROVED PROJECT NUMBER 24GE05367600

USE APPROVED DRAWINGS ONLY FOR CONSTRUCTION PURPOSES P-002

AARON GOULDING, PE
NJPE LICENSE NO. 24GE05367600

JACOBS

Sheet 1 of 1
2-14-20